



SEQUOIA SELECT[®]

ULTRA-PREMIUM VINYL SOFFIT



Impressive Appearance, Superior Performance

 GENTEK[®]

Sequoia Select® Ultra-Premium soffit lets you achieve a striking finish for your home while ensuring ample air circulation to the roof structure. Beautiful and practical, this best-in-class soffit system delivers 10 square inches of ventilation per linear foot.

House shown with Maize soffit.



Never Needs to be Painted High-performance vinyl color won't chip, flake or peel.

Easy Upkeep Rinse occasionally with a garden hose to refresh the appearance.

Durable and Dent-Resistant Stands up strong to dings and abrasions, and won't rot or warp due to moisture.

Architectural Appeal Solid soffit panels install beautifully as vertical siding to showcase entryways, gables and other accent areas.

Valuable Investment Creating a beautiful, low-maintenance exterior can greatly enhance the value of your home.

Lifetime Limited Warranty Backed by a lifetime limited, transferable warranty including fade and hail protection; see warranty for details.



Featuring richer, darker colors fortified with ChromaTrue® fade-defying technology, Sequoia Select Ultra-Premium vinyl soffit carries a lifetime limited warranty against fading. See printed warranty for complete details. **ChromaTrue®**

COLOR DEFINES THE DESIGN

Gentek colors keep personal style in mind. Deep, saturated palettes in cool neutrals and bold shades, along with light-changing grays and softer hues, will transform the appearance of your home with artisan style.

Classic Colors

Snow White	Monterey Sand	Dover Gray
Linen	Wicker	Sage
Sandstone	Canyon Clay	Juniper Grove
Maize	Pebble	Musket Brown*
Almond	Pearl	

*Designer color; soffit use only.

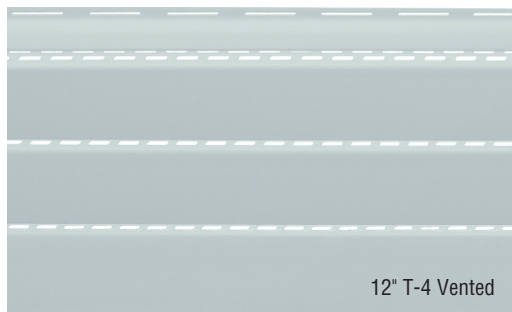
BUILD BEAUTIFULLY

Elevate your home to a whole new level of beauty and performance with everyday ease. Sequoia Select Ultra-Premium soffit expertly blends eye-catching elements of design with the modern practicality of simple upkeep.

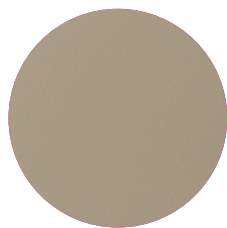
Built weather-tough, this premier soffit system will protect the hard-to-reach areas of your home with a resilient finish. The substantial 12" wide panel features hidden vent slots to further enhance the pristine appearance.



12" T-4 Solid



12" T-4 Vented



QUICK SPECS:

Nominal Thickness: .044"
Texture: Matte

COLOR MATCHING MADE SIMPLE

No need to settle for siding and trim that "almost match." Our Color Clear Through® collection of customer-preferred colors ensures that all Gentek products – siding, soffit, fascia, trim and rainware – will beautifully match throughout our vinyl, aluminum and steel product lines.



LAUNCH YOUR NEW LOOK

Whether you want to just refresh or press the reset button – one of the most difficult aspects of home remodeling is choosing colors. How will the new products and colors look on your home?

The Gentek Visualizer takes the guesswork out of the design process. This easy web-based design tool lets you instantly create a variety of exterior designs with options for siding, trim, roofing, front door paint, exterior window colors and more.

- Access it from any device; upload a photo of your home or choose a house image from our gallery
- Explore exterior designs with colors and product options – print, save and compare
- Products, profiles and colors applied in each design are listed for easy reference

Visit gentekusa.renoworks.com to get started with this exciting design tool! And check out myhomestyledesigns.com blog for creative inspiration, renovation tips and more.





A WORD ABOUT QUALITY

Gentek delivers the confidence and value only a true leader can provide. We proudly stand behind our products with the full faith of our more than 50 years of manufacturing expertise and some of the strongest warranties in the industry. Our voluntary participation in rigorous quality certifications and independent testing is further assurance you have made an excellent selection for your home.

ENVIRONMENTALLY FRIENDLY

Eco-friendly and sustainable, Gentek vinyl soffit helps conserve natural resources often used for home construction, such as cedar and other wood. And because vinyl never needs to be painted, it eliminates the use of paint, stain and other maintenance-related products that can harm the earth.

A LIFETIME OF PROTECTION

Sequoia Select Ultra-Premium soffit is backed by a lifetime limited, non-prorated, transferable warranty with hail protection and lifetime fade coverage. For complete warranty information, including limitations, ask your dealer for a copy of the Sequoia Select Ultra-Premium soffit warranty.



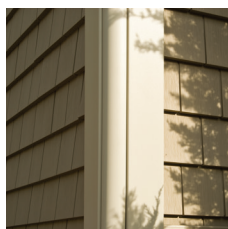
INDEPENDENTLY TESTED AND CERTIFIED

As tested in an independent program sponsored by the Vinyl Siding Institute, Sequoia Select Ultra-Premium solid soffit has earned ASTM D3679 certification, the industry's highest standard for quality.



Pertains to Sequoia Select Ultra-Premium solid soffit used as vertical siding. Excludes the color Pebble.

Consult the VSI website at www.vinylsiding.org for a current list of certified products and colors.



DETAILS THAT MAKE THE DIFFERENCE

Accentuate the architecture of your home with TrimEssentials by Gentek® exterior trim and accessories. Exquisitely crafted window and door surrounds, fluted lineals, corner posts and other accents – as well as decorative shakes and scallops – will give your home personality and style.



BUILT FOR YOU... GENTEK WINDOWS AND PATIO DOORS

For your total home solution, choose Gentek replacement windows and patio doors. Advanced technology merged with enduring beauty, superior energy savings, easy upkeep and excellent value make it the ideal choice for today's homes. See your Gentek Sales Representative for details.



3773 State Road, Cuyahoga Falls, Ohio 44223
www.gentekinc.com

Make us a part of your home.



Colors are reproduced by lithographic process and may vary slightly from colors of actual product. Product specifications are subject to change without prior notice. USGBC and related logo is a trademark owned by the U.S. Green Building Council.

9831-354/1-21/POD TMR © 2021, Gentek Building Products, Inc. Printed in the U.S.A.

